

MAGNUM Vanity

120v : **3-588-xxx**

277v : **37-588-xxx**

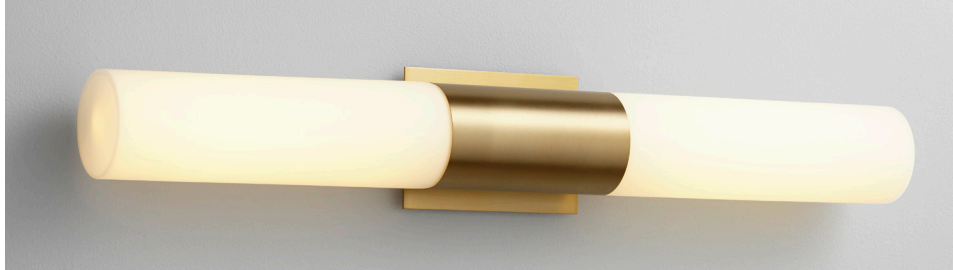
oxygen

FIXTURE TYPE _____

LOCATION _____

PROJECT _____

DATE _____

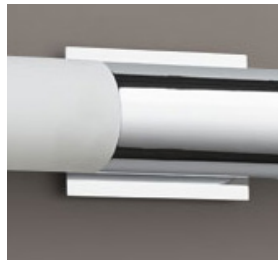


-40 Aged Brass

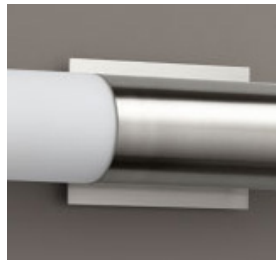
Diffusers:



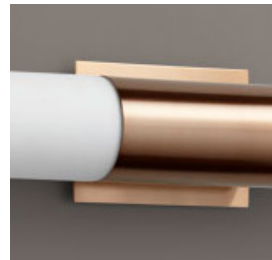
-1 White Opal Glass



-14 Polished Chrome



-24 Satin Nickel



-25 Satin Copper



- Matte White Acrylic

LIGHT SOURCE 2 x 11.9W LED, 3000K, CRI 90

LUMINAIRE POWER 30.5W at 120V

RATED LIFE 60000 hr RL

OPTIONAL COLOR TEMPERATURES 2700K, 3500K, 4000K

LUMEN OUTPUT Delivered: (-1) Glass: 2369 lm (LM-79)
Acrylic: 2256 lm (LM-79)

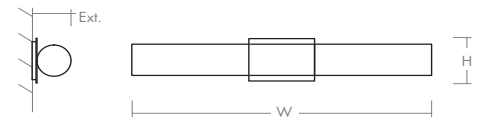
INPUT VOLTAGE 120V or 277V

DRIVER OUTPUT 2 x 350 mA, 12W

DIMMING 0-10v & Phase (ELV) Dimming - 50/60HZ. 100% to 10% Dimming

CONSTRUCTION Plated Steel and Acrylic or glass

METAL FINISH / DIFFUSER
 (-114) White Opal Glass / Polished Chrome
 (-124) White Opal Glass / Satin Nickel
 (-125) White Opal Glass / Satin Copper
 (-140) White Opal Glass / Aged Brass
 (-14) Matte White Acrylic / Polished Chrome
 (-24) Matte White Acrylic / Satin Nickel
 (-25) Matte White Acrylic / Satin Copper
 (-40) Matte White Acrylic / Aged Brass



DIMENSIONS

W: 30.75"

H: 4.75"

Ext: 4.00"

M.C: 2.38" From top of fixture

MOUNTING 4" Octagonal J-Box,
2" x 3" J-Box

STANDARDS ETL Dry/Damp listed, ADA Compliant, Conforms to UL STD 1598, Certified CAN/CSA, STD C22.2 No 250.0.

Order example for standard fixture:

3-588-24 (x- Voltage - xxx-Sequence # - xx-Finish)

3: 120v, 37: 277v

Order example for optional color temperatures: **3-588-2724**

27: 2700K, 35: 3500K, 40: 4000K

